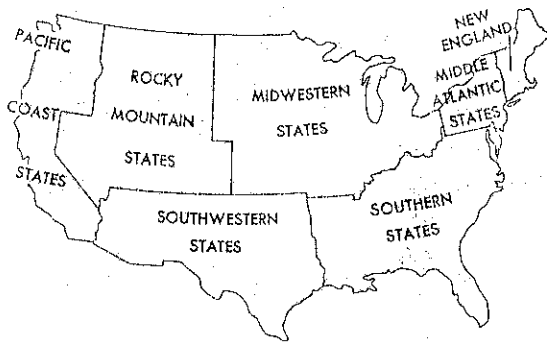


City of  
**WOOD  
RIVER**

# PIPELINE

MARCH, 1990

PIPELINE design by Marlene Dupy



## CENSUS 1990

Between March 25th and April 1st, all city residents will be receiving a census questionnaire from the "United States Department of Commerce". Information gathered from these questionnaires will be utilized to establish population figures for the 1990 Census.

The City has provided this special edition of the Pipeline to impress upon the citizens the importance of their completing the Census questionnaire and promptly returning it to the Census Bureau.

The Census is conducted once every ten years and the population totals will remain the same until the year 2000. The total population figure for the City of Wood River will be the basis for state and federal funding of community programs and elected political seats, as well as educational funding for our school system.

Some estimates indicate that the City could lose up to \$4,200 over the next ten years for every adult or child not counted in the 1990 Census. This could constitute a substantial loss of revenue if the public does not respond to the Census Bureau.

The majority of us will receive the short form questionnaire, but there will be longer forms randomly sent to a smaller group of the population. The longer questionnaire involves more detailed questions about the family at a particular address. It should be noted that all information collected by the Census Bureau is protected by federal law. This means that the Bureau will tabulate the answers for population and Census figures and the information you provide cannot be disseminated to other federal or state agencies, law enforcement, or private enterprise such as mailing lists. With this information completely protected, we urge you to complete the questionnaire in its entirety as accurately as possible.

Once the bureau has received the questionnaires, they will review the records and compile a list of addresses whose occupants failed to return their questionnaires. Representatives will then go to those addresses to conduct a verbal interview for Census information.

The mailing of the Census questionnaires is one of the last steps in a long process which began in 1986 for the Census Bureau. The City of Wood River became involved in 1989 and has conducted reviews of housing counts provided by the Census Bureau. Together we have insured that every household in the City will be included in the count and we are ready for the mailing of the questionnaires.

## MORE ON THE CENSUS . . .

The responsibility of an accurate population count now lies with you, the public. We urge you to take a few moments of your time to complete the Census forms when you receive them and return them to the Census Bureau. If you have questions, contact City Hall.

The City will have one more step in the process, that being review of the preliminary population figures. We will be conducting that review during the summer and fall of this year. It will be the first part of 1991 before the population counts will be final.

### WOULD YOU LIKE TO HELP?

The Census Bureau will be hiring people to assist in the accumulation of Census information. The positions will be full time for 2 to 8 weeks and will pay \$6.00 per hour. Testing is required for those positions. If you are interested, testing will be conducted at Job Services, 90 North Port Drive, Alton, every Monday in March. Tests will be given at 10:00 AM and at 1:00 PM each Monday.

For further information, call the Census Bureau in Belleville at (618) 236-3040 or (618) 236-3052 or Job Services at 466-8221.



# Take Time for Fun!

Illinois Parks & Recreation

## EDUCATION & AWARENESS PROGRAM TO CONTINUE THROUGH MARCH

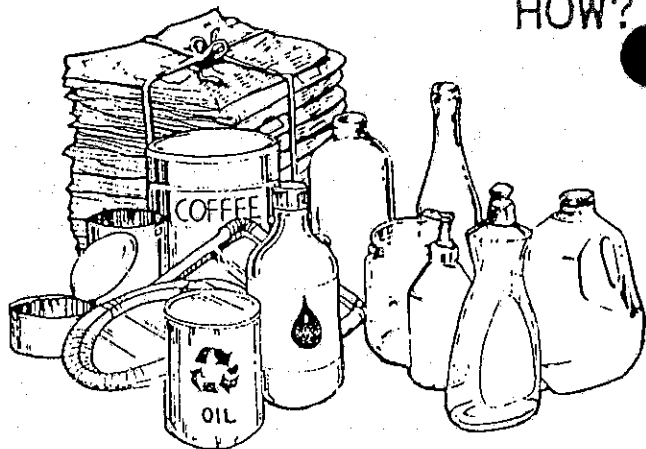
You will be seeing reminders throughout this month about the importance of the Census.

Your children will probably be reminding you to complete the forms. The City will be conducting an awareness program in the schools to familiarize the students with the Census process. We will urge the students to remind their parents of the importance of the Census and to encourage them to complete the questionnaires. If you have any questions, contact City Hall and we will try to help.

## RECYCLING: WHY?

### WHAT?

### HOW?



Every American discards about 5 pounds of solid waste each day in his or her trash. Twenty years ago, there were nearly 1,200 landfills in Illinois. Today there are only 132 left, and half of these are expected to reach capacity in the next five years.

Why recycle? . . . . .

- to reduce the need for landfill space.
- to conserve energy.
- to save our natural resources.
- to protect our environment.
- to help solve the solid waste volume problem.

Recycling requires only a small amount of space and a few minutes per day. Your home recycling center can be set up in a garage, closet, or kitchen corner. If you need to start your recycling center are twine, a can opener, and three sturdy boxes - one for paper, one for glass, and one for cans. Most people who recycle find that a monthly trip to a collection center is convenient. Tips on what and how to recycle are listed below:

**Paper** - Newspaper - stack neatly and tie in bundles or place in paper bags. (Recycling 1 ton of paper saves 17 trees)  
Cardboard - break down flat and tie in bundles.  
Hi-grade or Ledger Paper - (typing paper, computer paper, writing paper) place in box or tie in bundles.

**Glass** - Used bottles and jars must be reasonably clean and free of lids and caps. Milk white glass, plate glass, light bulbs, crystal and fluorescent bulbs CANNOT be recycled.

**Metals** - Aluminum Cans - rinse and flatten, bag or box. (The same energy required to produce one can from raw materials will produce 20 cans by using recycled aluminum).  
Steel/Tin Cans - rinse and remove labels and ends, then flatten. (The market for these cans is currently limited).

**Plastics** - Soda and Milk Bottles - rinse and remove metal caps. (Plastics recycling is in its infancy. Market is limited, but growing).

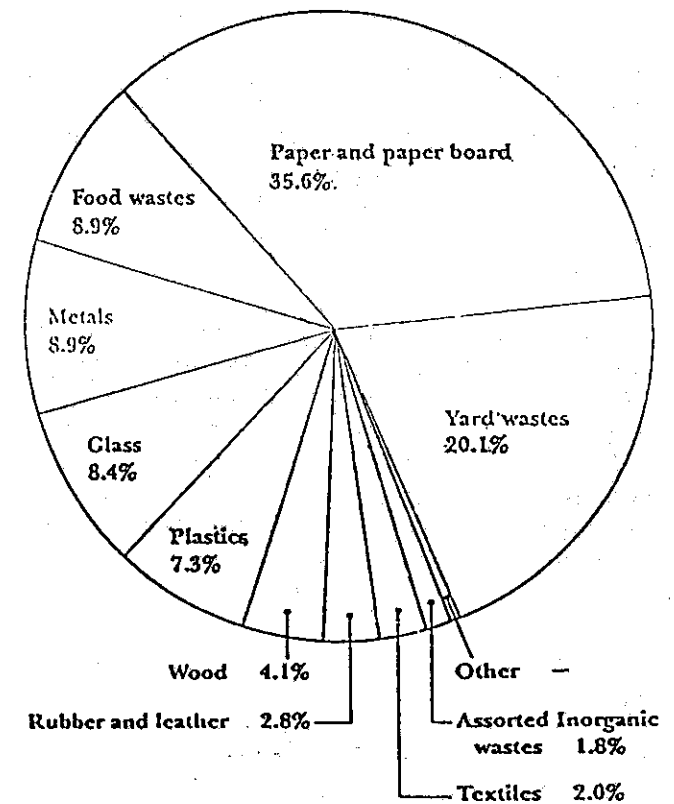
**Motor Oil** - drain carefully and seal container. Some garages and service stations accept used oil.

Recycling is not a cure-all for solid waste problems, but recycling offers the most practical and simple start to solving our environmental and disposal space problems.

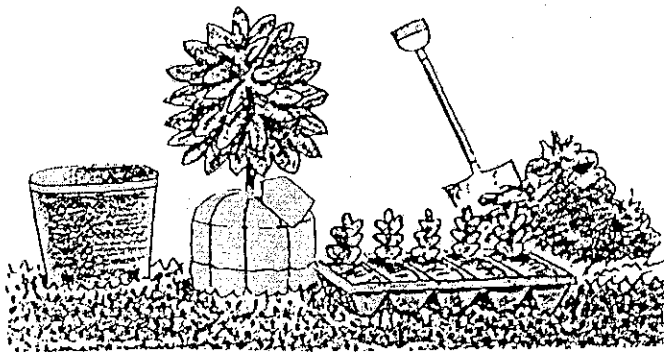
The City of Wood River has set a goal of July 1, 1990 to start a recycling and composting program.

## SOLID WASTES

Each year, the United States generates more than 150 million tons of residential and commercial solid wastes. Our solid waste breaks down like this:



The Pipeline is published by the City of Wood River to inform its residents and promote better understanding between the City government and the people it serves. Articles are typically supplied by the staff; photography, editing and layout by Brenda Diveley, assisted by Jean Bruce and Jan Sneed.



At this time in history, it is necessary for each of us to contribute to preserving our environment. Shown below is one way we can each do our share and lessen the impact our everyday living is placing on our geographical and biological surroundings.

As indicated on the pie chart on the previous page, yard wastes compose over 20 percent of total solid wastes generated by our population. One way to help solve this problem would be to build your own compost pile.

The benefits of using compost are the key to soil fertility. The end product of composting is humus, the broken-down organic matter that is the basis of soil life. Tiny microorganisms change nutrients into a form that your plants can use. Some of the benefits of composting are:

Control of pH - by adding regular amounts of compost, your soil will soon be within a pH range of 6.5 to 7.5; thereby, producing plants that are healthier and more abundant.

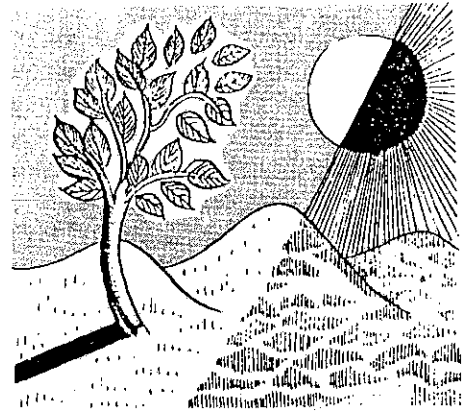
Heat absorption - finished compost will darken most soils helping them to better absorb heat from sunlight; thus extending spring and fall growing seasons.

Drainage, water retention, aeration - Acting as a sponge, humus helps hold food, moisture, and air so plants can have access to them at will.

Nutrient retention - Humus holds water-soluble nutrients and releases them slowly to plants.

Free choice feeding - allows your plants to choose their own diet by using the nutrients from the humus as they require.

Compost helps control parasitic worms and soil diseases. It attracts soil-building earthworms, adds trace minerals to the soil, and makes plants hardier and more resistant to insects and diseases.



By alternating layers of different grades of yard and household wastes, you can have compost ready to place around your yard within two weeks to three months. By placing this compost around trees, flowers, and plants, you are not only helping to make healthier plants, but also eliminating a very large amount of manual grass trimming.

Information on how to build a compost pile may be found at the library.

As space allows, more articles about recycling and our environment will be published in the Pipeline.



Look for Spring Clean Up Schedules and information on the Fifth Annual Family Days Celebration in the upcoming May Pipeline.

